



ZENA

COSMETICS

Catalogue

| | |
|------------------|----|
| PEELING ALGAE | 3 |
| SERUMS | 7 |
| BB GLOWING | 17 |
| HYALNANO FILLING | 19 |
| SKIN CARE | 21 |
| ACIDS | 26 |

PEELING ALGAE



Peeling Algae

Based on regenerative and healing process of skin natural cycle, accelerates regenerative process, also stimulates blood circulation and replenishes large amount of vitamins and minerals necessary for beautiful and flawless skin.

TYPES OF USAGE

- Microscopic trauma and stimulation
- Improvement of oxygen delivery system
- Activation of skin regeneration system
- Acceleration of blood circulation
- Cell rejuvenation

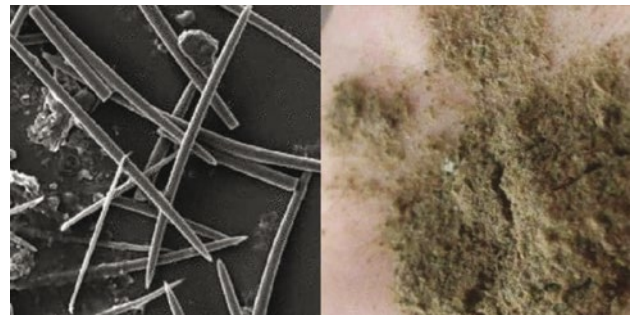
HOW IT WORKS

- Removes dead cells, tightens pores, soothes irritations, clean and radiant, mattifies the skin
- Reduces dark circles under the eyes and make the skin look complexion replenished
- It helps reducing inflammations and improves local circulation of blood
- Specially formulated to help chronic sun-damaged skin, reducing the wrinkles
- For hyperpigmentation and melasma
- Procedure reduces post-acne and stretch marks
- Good for acne, can be applied pointwise on inflammation areas



Sachet, 5 g

Spicules (spikes) contain antibacterial substances of marine organisms, have porous structure, which allows them to absorb the ingredients and carry them to the deepest layers of skin.



INGREDIENT

100 % Natural Algae

PRECAUTION

Use of algae is allowed only for certified specialists

Peeling Algae

It perfectly exfoliates old cells, which leads to skin rejuvenation: turgor is restored, age spots are discolored, and rashes become less.

Microneedle base made of a special type of algae sponge powder. Its sharp needles act on the epidermis and stimulate collagen production. Superficial blood circulation and skin protective properties are improved. The spongin protein in the composition has an antiseptic effect.

EFFECTS

1. EXHAUSTING EFFECT

Exfoliation of the epidermis, improvement of texture, skin relief, complexion, stimulation of epidermis and dermis upper layers

2. ANTI-INFLAMMATORY EFFECT

Antibacterial action against inflammatory elements, their number decreases and emergence of new ones is controlled

3. PREVENTION OF SEBACEOUS GLANDS OCCLUSION

The work of sebaceous glands and production of sebum are normalized, connections are weakened between cells of stratum corneum of epidermis, hyperkeratosis is eliminated, pores are narrowed

4. INCREASING SKIN TONE

Collagen synthesis is enhanced and production of its destroying enzymes is suppressed, depth of wrinkles decreases, and scars are smoothed

5. STIMULATION OF EXCHANGE OF SUBSTANCES IN CELLS

Peeling components stimulate metabolic processes in cells and saturate tissues biologically active substances (vitamins, microelements)

6. IMPROVEMENT OF MICROCIRCULATION

As a result of increased blood circulation, stagnation resolves vascular nature, complexion improves, oxygen flow to skin cells increases.

ADVANTAGES

- Exclusively herbal ingredients
- Peeling procedure without protein denaturation
- Can be applied to different face and body areas, taking into account individual skin characteristics



RESULTS

- Comedones, pimples, acne, hormonal rash disappear or become smaller
- Swelling and bruising under eyes disappear
- Aging skin becomes firmer and tighter
- Aging skin acquires healthy color and looks rejuvenated
- Age spots and abundant freckles brighten
- Skin tone is restored

CONTRAINDICATIONS

- *Dermatoses of any genesis, infectious diseases*
- *Herpes*
- *Neoplasms on skin*
- *Skin prone to allergic reactions*
- *Thin skin with telangiectasias*
- *Skin damage*
- *All types of nevi (preliminary examination by dermatologist is recommended)*
- *Pregnancy*

Peeling Algae Protocol

After collecting all the necessary information obtained during the questionnaire, the cosmetologist prescribes a peeling option suitable for the patient (depth, type). The specialist must notify about the preliminary preparation of the skin for the process of deep cleansing of the stratum corneum (exfoliation), about the procedure itself, about the possible consequences and result after complete recovery.

If the upcoming peeling is to get rid of pigmentation on the face, then 14 days before the procedure, it is necessary to start daily application of Zena Skin Toner with a whitening effect together with Zena Cleansing Gel. It will stop the appearance of new cells that produce the pigment melanin (melanocytes).

To achieve a positive result from the procedure for removing dead cells from the upper layers of the skin (peeling), as well as to avoid possible unpleasant consequences, it is necessary to carry out good and appropriate preparation in time. Depending on the type and depth of the peeling effect, a list of necessary pre-peeling procedures is assigned.

PRE-PEELING CARE

The specialist prescribes home care 2 weeks before the peeling procedure.

Dry Skin: Apply Zena Cleansing Gel daily, Zena Skin Toner 2–3 times per week.

Oily Skin: Zena Cleansing Gel daily, Zena Skin Toner first week once a day, second week Zena Skin Toner twice a day, stop using 2–3 days before the procedure.

Do not use intensive moisturizers 2-3 days before the procedure, do not use other products with acids and retinols. This pre-peeling treatment will prepare the skin and get better effect of the peeling procedure.

We recommended to make a treatment overnight.

APPLICATION

Dilute the powder with 10 ml of Algae Peeling solution (Toner) and 5 ml of warm water. Apply a thin layer to the skin of the face and start the massage with light movements. **When treating on the body, you can dilute the powder 1:4.**

1. SUPERFICIAL PEELING

It activates blood circulation and improves skin condition. This type of peeling causes slight reddening of the skin, which disappears in a day. Dilute the powder with water until it is mushy. Apply a thin layer on the face with light movements.

2. MEDIUM

Causes flaking, superficial or deep. Good for treating acne scars, stretch marks, stagnant spots after acne. Perfectly removes medium and fine wrinkles. After the procedure, it gives a sensation of strong peeling.

3. DEEP PEELING

This type of peeling causes reddening of the skin, and within a week, complete renewal of the upper layer of the skin.

MASSAGE TIME

1. For light peeling & sensitive skin, rub in for 1–2 min.
2. For medium peeling & sensitive skin — for 5 min.
3. For deep peeling, rub in with massage movements for 10–5 minutes. Leave it as a face mask.

After 5–10 minutes, wash off well with warm water.

PROCEDURE CLOSING

Apply Zena Post Treatment gel, spread it evenly over the skin with massage movements. Pat the client's skin dry with a dry tissue. Apply Zena Sunblock cream SPF50, spread evenly over the skin.

POST-TREATMENT

Most patients have minimal redness for 12–24 hours, your client can feel the needles on their face for about 30 hours until they completely dissolve. Due to the nature of these treatments, and the selected time of the procedures your client may experience skin flaking for a 3–7 days. **Do not pick or pull at any loose skin, as this can cause hyperpigmentation or scarring.**

On the day of the peeling procedure, the client does not wash his face and does not perform any procedures and does not use facial care products.

The next day after the procedure, in the morning and in the evening, your client wash face with water and apply Zena Post Treatment Gel. Do not put the face directly into a hot shower spray. Do not use a steam room, Jacuzzi, or sauna. Do not go swimming.

From 2 to 7 days after Zena Algae peeling procedure, exclude the use of creams, gels and lotions and other facial care products for a deeper peeling effect. Avoid direct sun exposure and excessive heat for at least 7 days (getting overheated internally can cause hyperpigmentation). In case of sun exposure, the use of Zena SPF 50+ cream is mandatory.

SERUMS

| | |
|--|----|
| 24k Gold Hyaluronic Acid..... | 8 |
| Anti-Wrinkle Essence..... | 8 |
| Astaxanthin & Vitamins..... | 9 |
| Caviar & Copper Peptide Wrinkles & Fine Lines..... | 9 |
| BotoxAlternative..... | 10 |
| Caviar Gold Hyaluronic Acid..... | 11 |
| Collagen Hyaluronic Acid..... | 11 |
| Eye Care Wrinkle & Dark Circle..... | 12 |
| Low Hyaluronic Acid..... | 12 |
| Nine Peptide Moisturizing..... | 13 |
| Q10 Elastin Hyaluronic Acid..... | 13 |
| Scars, Stretch Marks & Rosacea..... | 14 |
| Serums Protocol..... | 15 |

24k Gold Hyaluronic Acid

Highly concentrated low molecular weight hyaluronic acid with 24K gold, collagen, vitamin C and rose extract.

It imparts an opulent, radiant glow and locks in moisture for ultra-hydrated skin. This concentrated treatment helps to reduce the look of fine lines and wrinkles, leaving skin looking silky smooth, firmer, radiant, revitalized and youthful. It plumps skin and enhances the volume to create that same firm yet soft and supple skin applied topically to the skin can essentially encourage skin to form new, which basically reverses the aging process and gives us the full, smooth skin we once had.

HOW IT WORKS

- Anti-aging effect
- Wrinkle smoothing & reduction
- Skin hydration & whitening
- Pores reduction
- Lifting effect

INGREDIENTS

Purified Water (Aqua), 24k Gold, Soluble Collagen, Hyaluronic Acid, Vitamin C, Rosa Extract, Phenoxyethanol



Ampoule, 10 ml

Anti-Wrinkle Essence

Highly concentrated low molecular weight hyaluronic acid with natural caviar extract, placenta, peptides and seaweed extract.

Light emulsion balls contain innovative solution with high concentration of active nutrients inside. Provides deep skin hydration, saturation with microelements and nutrients, strengthening and toning skin, preventing appearance of wrinkles.

HOW IT WORKS

- Anti-aging effect
- Wrinkle smoothing and reduction
- Skin hydration
- Skin smoothness and elasticity
- Lifting effect

INGREDIENTS

Purified Water (Aqua), Roe Extract, Placenta, Blue Copper Peptides, Seaweed Extract, Hyaluronic Acid, Soluble Collagen, Phenoxyethanol



Ampoule, 10 ml

Astaxanthin & Vitamins

Concentrated formula with Astaxanthin, 6,000 times more powerful antioxidant than vitamin C. Can stop the visible signs of aging. This super antioxidant serum will help repair and protect your skin from premature aging by naturally boosting collagen and elastin production, stimulating cell renewal, diminishing the appearance of wrinkles and dark spots, while increasing healthy circulation for a youthful, luminous complexion.



Ampoule, 10 ml

HOW IT WORKS

- Normalizes blood flow and helps to reduce the symptoms of rosacea
- Whitening and brightening effect
- Exfoliates, making skin smooth and even-toned
- Repairs the cellular structure of the epidermis, optimizing UV protection
- Decreases clustering of melanin granules, reducing brown spots or pigmentation
- Decreases sebum production, treating acne
- Promotes a healthy cellular membrane
- Helps eradicating pre-cancerous skin lesions
- Improves hydration both in and around cells

INGREDIENTS

Purified Water, Natural Astaxanthin Solution, Vitamin E, Vitamin A, Hyaluronic Acid, Wheat Protein, Marine Algae Extract, Phenoxyethanol

Caviar & Copper Peptide Wrinkles & Fine Lines

Restores the natural elasticity of the skin, makes the skin smooth, gives radiant, youthful and healthy look. Copper peptides enhance collagen synthesis in fibroblasts. Many studies have shown that copper peptides stimulate even more collagen synthesis than the main anti-aging retinoids (tretinoin) and vitamin C do directly to follicles. Can stop hair loss before or after chemotherapy.



Ampoule, 10 ml

HOW IT WORKS

- Skin remodeling, removal of old proteins and cells, age spots & stretch marks removal
- Replacement of damaged collagen & elastin
- Skin elasticity restoration & wrinkles reduction
- Increased synthesis of new collagen, elastin, proteoglycans and glycosaminoglycans
- Reduction of scars, accelerated healing of skin
- Skin damage reduction

INGREDIENTS

Purified Water (Aqua), Hyaluronic Acid, Copper Tripeptide-1, Soluble Collagen, Phenoxyethanol

Botox Alternative

Alternative to botox without injections. Based on peptides of neuromodulators that weaken muscle contraction. The fast effect allows you to preserve natural facial expressions and emotionality. Preferred for use with hardware cosmetology. Not for injections.

Peptides that attenuate muscle contraction belong to the class of neuromodulators. The first in the list of "cosmetic analogs of Botox" is the peptide Argireline (INCI: Acetyl Hexapeptide-3). Appearing in the early 2000s, it quickly gained popularity. It is aimed at combating expression lines. The six amino acids of argireline repeat a region of the SNAP25 protein required for the binding of the synaptic vesicle of the axon to the presynaptic membrane. In the axon, argireline competes with the SNAP25 protein and instead integrates into the temporary SNARE protein complex. This complex is formed from several membrane proteins just before the vesicle binds to the membrane and is required for successful exocytosis. The defective complex cannot provide the necessary contact of the vesicle with the membrane, as a result, the release of the mediator into the synaptic cleft does not occur. This means that the muscle does not receive a signal to contract and continues to be in a relaxed state.



Ampoule, 10 ml

HOW IT WORKS

- Lifting effect
- Anti-aging action
- Wrinkles smoothing and reduction
- Modeling action
- Fast hydration
- Sking smoothness and elasticity
- Pores reduction
- Face contour improvement

INGREDIENTS

Purified Water (Aqua), Hydrolyzed Collagen, Niacinamide, Sodium Hyaluronate, sr-(Oligopeptide-91 Clostridium Botulinum Polypeptide-1), Peptide Complex

PROTOCOL

- Procedure for non-invasive facial wrinkle correction usually takes 40–45 minutes
- Before applying, specific skin preparation is carried out, then cosmetologist applies the complex along wrinkle lines by hardware or dermapen
- For long-term maximum effect (the result of correction can last up to a year), recommended to carry out several procedures in course (four to five within a month)

Caviar Gold Hyaluronic Acid

Highly concentrated low molecular weight hyaluronic acid with natural caviar extract, gold, placenta, collagen, seaweed extract.

Contains matrix peptides that penetrate into the deep layers of the skin, trigger and stimulate cell renewal and have a powerful anti-aging effect. To facilitate penetration through the lipid barrier of the upper layer of the skin, peptides need to be combined with a fatty acid, therefore the most effective form is capsules in the form of balls, which are mixed directly when applied to the skin. In this form, they are most productively included in the natural dermis processes.

HOW IT WORKS

- Anti-aging action
- Fast hydration
- Skin whitening
- Pores reduction
- Lifting effect
- Wrinkles smoothing and reduction

INGREDIENTS

Purified Water (Aqua), Caviar Extract, Placenta, Blue Copper Peptides, Marine Algae Extract, Hyaluronic Acid, Soluble Collagen, Phenoxyethanol



Ampoule, 10 ml

Collagen Hyaluronic Acid

Highly concentrated low molecular weight hyaluronic acid with natural caviar extract, gold, placenta, collagen, seaweed extract.

Contains matrix peptides that penetrate into deep layers of skin, trigger and stimulate cell renewal and have a powerful anti-aging effect. When applied with dermapen, it smoothes skin relief, decreases wrinkles depth. Skin becomes tighter, more elastic and firm. Skin color becomes more even. The concentrate has unique contents of low molecular weight (LMW) collagen oligopeptides of marine origin. The amino acid composition of collagen oligopeptides mainly consists of glycine, proline and hydroxyproline. These three amino acids are critical for the accumulation of collagen fibers, ensuring optimal skin hydration and firmness.

HOW IT WORKS

- Anti-aging effect
- Wrinkle mesh & skin sagging reduction
- Fast hydration
- Lifting effect
- Wrinkles smoothing

INGREDIENTS

Purified Water (Aqua), Collagen, Protein, Hyaluronic Acid, Sodium Citrate, Phenoxyethanol



Ampoule, 10 ml

Eye Care Wrinkle & Dark Circle

Using an eye serum is the best way to renew and firm delicate skin around eyes. Helps strengthening blood vessels in the skin around the eyes. Witch Hazel Extract contains catechins that minimize damage to skin cells, promote skin rejuvenation. Ginseng extract is traditionally used to enhance microcirculation. Chamomile extract improves the recovery rate of damaged skin. Chamomile contains 30 different active compounds with anti-inflammatory properties. Marine hydrolyzed collagen contains low molecular weight (LMW) collagen oligopeptides that provide optimal skin hydration and firmness.



Ampoule, 10 ml

HOW IT WORKS

- Anti-aging effect
- Eye bags & edema reduction
- Dark circles reduction
- Wrinkle mesh & skin sagging reduction
- Fast hydration
- Lifting effect

INGREDIENTS

Purified Water (Aqua), Polysaccharides, Chamomilla Recutita (Matricaria) Flower Extract, Witch Hazel Extract, Ginseng Extract, Hyaluronic Acid, Marine Hydrolyzed Collagen, Allantoin, Hydrolyzed Silk, Phenoxyethanol, Ethylhexylglycerin

Low Hyaluronic Acid

The low molecular weight (LMW) hyaluronic acid has also shown to increase important and needed enzymes in the skin, to increase skin health in general. Low Hyaluronic acid excels in this area and is actually able to absorb approximately 1,000 times its own weight inside the extracellular spaces within the matrix of the skin. It plumps skin and enhances the volume to create that same firm yet soft and supple skin applied topically to the skin can essentially encourage skin to form new, which basically reverses the aging process and gives us the full, smooth skin we once had.



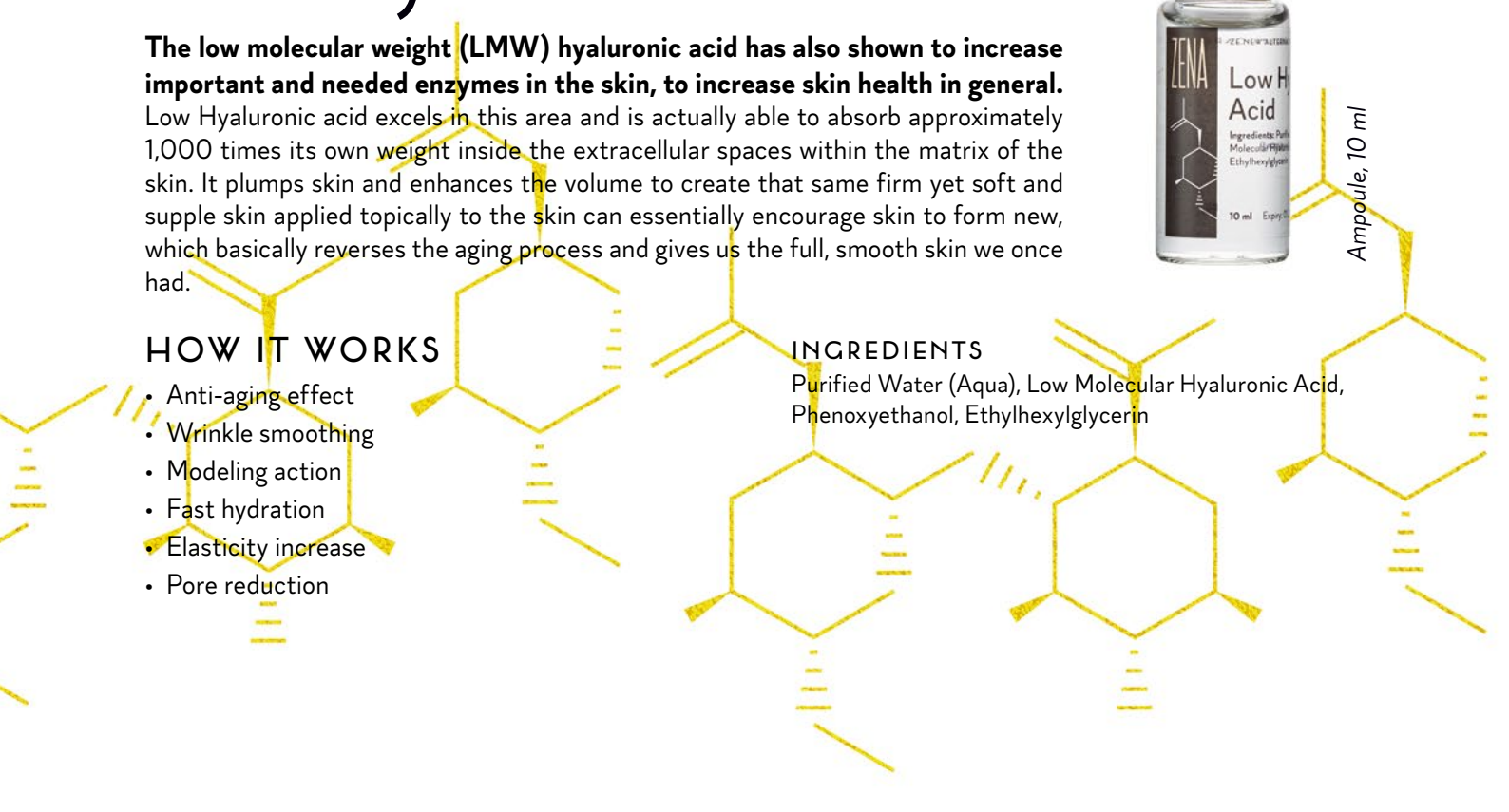
Ampoule, 10 ml

HOW IT WORKS

- Anti-aging effect
- Wrinkle smoothing
- Modeling action
- Fast hydration
- Elasticity increase
- Pore reduction

INGREDIENTS

Purified Water (Aqua), Low Molecular Hyaluronic Acid, Phenoxyethanol, Ethylhexylglycerin



Nine Peptide Moisturizing

Peptides are chains of amino acids become proteins, which is important skin element. This serum applied topically to skin can essentially encourage skin to form new collagen, which basically reverses aging process. Contains 9 active peptides designed to achieve maximum effectiveness. Provides visible results, help moisturize and repair skin tissue regardless of personal skin chemistry. While most products have many ingredients on the label, they only have 3-4 active ingredients that have any effectiveness at all. Peptides restore disturbed microcirculation in different layers of skin, normalize the condition of vascular walls. Collagen can plump skin and lips, and when skin is firmer and plumper, wrinkles and fine lines will be less visible.

HOW IT WORKS

- Skin barrier improvement
- Wrinkle reduction
- Skin elasticity increase
- Inflammation reduction

INGREDIENTS

Purified Water (Aqua), Hyaluronic Acid, Nano Gold Foil, Nine Peptide Complex, Coenzyme Q10, Phenoxyethanol



Ampoule, 10 ml

Q10 Elastin Hyaluronic Acid

Has pronounced antioxidant qualities, protects cells from free radicals, helps prevent skin aging. Stimulates the supply of energy to cells, accelerates their regeneration, affects skin rejuvenation.

Elastin is a filamentous protein. It is found in human connective tissue. When a concentrate with elastin is applied to the skin, a peptide film is formed, which moisturizes the skin and prevents moisture loss, thereby providing a delicate lifting. These two components in a harmonious tandem complement each other, enhancing the effect of each other in a cosmetic product.

HOW IT WORKS

- Lifting effect
- Anti-aging action
- Wrinkle smoothing and reducing
- Fast hydration
- Skin elasticity increase
- Pore reduction
- Face turgor improvement

INGREDIENTS

Purified Water (Aqua), Nano Gold Foil, Elastin, Coenzyme Q10, Soluble Collagen, Phenoxyethanol, Highly Concentrated Low-Molecular Hyaluronic Acid



Ampoule, 10 ml

Scars, Stretch Marks & Rosacea

High content of rutin has anti-couperose effect: this ingredient strengthens peripheral vessels, reducing their fragility and permeability, promoting the formation of new collagen.

Recommended to use with dermapen at initial stage of scar formation after tissue healing. The serum supports the regenerating effect, prevents inflammation, and promotes collagen and elastin production. Also, the serum helps restoring existing scar formations and stretch marks after skin injuries.



Ampoule, 10 ml

HOW IT WORKS

- Hyperpigmentation
- Age spots remedy
- Rosacea solution
- Skin inflammation, irritation relief
- Skin tone blemishing & brightening
- Antiseptic effect
- Good for acne and post acne

INGREDIENTS

Purified Water (Aqua), Sophora Japonica, Soluble Collagen, Ginger Extract, Hyaluronic Acid, Phenoxyethanol

TYPES OF USAGE

- Suitable for dermapen (select needle length accordingly)
- In hardware cosmetology
- Active ingredient for massage with Zena Algae Peeling
- Active ingredient for alginate masks

Serums Protocol

Although the microneedling procedure often varies by practitioners, the technique produces substantial clinical results with controlled dermal wounding while stimulating the wound healing cascade necessary for adequate collagen production. The use of an electric-powered microneedling device with disposable needle tips (containing 12–36 needles), adjustable speeds, and depths of penetration (1–3 mm) is a relatively easy treatment to incorporate into a cosmetic dermatology practice. Although device design varies by manufacturer, all of the available handheld devices work similarly. The treatment protocol can be applied to any electric-powered microneedling device with adjustable depth and speed.

PRE-TREATMENT RECOMMENDATION

All patients may continue the use of any home skin care regimen (including retinoids, antioxidants, and growth factors) up until the time of the procedure. Oral anticoagulants do not need to be discontinued as the risk of uncontrollable bleeding during the microneedling treatment is negligible. Since the microneedling procedure is often used in combination with other treatments such as injections of hyaluronic acid filler and chemical peels and various dermatologic lasers, no “wash out” period is necessary before initiation of treatment. It is, however, recommended that for same day treatments, the order of treatments be applied from deep to superficial (e.g., injectables before microneedling and/or laser irradiation) to maintain visual landmarks and prevent diffusion of injectables caused by tissue edema or bleeding.

CLINICAL ASSESSMENT

In addition to evaluation of the treatment area(s), a meticulous visual assessment of overall skin quality and texture should be made. A thorough synopsis of the procedure, including the risks, benefits, and alternative treatment options should be discussed with the patient. A consent form should be reviewed in its entirety, leaving time for patient questions before treatment. Photography of treatment areas should be performed before each session to adequately assess clinical progress. Comparison of baseline and posttreatment photographs, as well as clear expectations of the anticipated number treatments, is vital to patient satisfaction and facilitates an appreciation of clinical outcomes.

TREATMENT CONTRAINDICATIONS

Contraindications to microneedling treatment are limited. Contraindications include inflammatory acne, active herpes labialis or other local infection within the treatment area, keloidal predisposition, and immunosuppression. In addition, care should be taken with concomitant microneedling near botulinum toxin injection sites to avoid potential unwanted toxin diffusion.

PRETREATMENT CONSIDERATIONS

Although any skin phototype can be treated, it is recommended that treatment be delayed in patients with a history of recent sun exposure (or who are visibly tanned) until all traces of suntan have faded to avoid post-treatment dyspigmentation. Individuals with a history of oral herpes labialis may be at increased risk for viral reactivation during the post-treatment period. In these patients, a 1-week course of oral antiviral therapy as a prophylactic measure (beginning on the day of treatment) is recommended to minimize this complication. In addition, microneedling over any inflammatory acneiform lesions may predispose the patient to the development of bacterial micro abscesses or granulomas. As such, avoidance of treatment in patients with active acne or other inflammatory lesions is recommended.

SKIN PREPARATION AND ANESTHESIA

Meticulous skin preparation is important to decrease the risk of superficial skin infections. A gentle skin cleanser to remove makeup and debris from the skin’s surface should be used before application of a topical anesthetic cream or gel to the treatment area(s). The authors typically apply a compounded 30% lidocaine cream (nonoccluded) for 20 to 30 minutes which is removed with water-soaked gauze and alcohol prep immediately before the microneedling procedure.

DEVICE PREPARATION

A handheld microneedling device powered by a battery pack or alternating current power cord is used at adjustable depth settings ranging from 0 to 3.0 mm. When used with corded power, the device speed can be adjusted, ranging from 10,250 to 23,750 rpm.

Serums Protocol (CONT'D)

With battery power, the device speed is fixed at 13,500 rpm. Sterile disposable needle cartridges (12 array count/32 gauge and 36 array count/30 gauge) can be used to tailor therapy based on the specific treatment location. In general, skin on the forehead, lower eyelids, and nasal bridge are treated with needle depths ranging from 0.5 to 1.0 mm, whereas the cheeks, perioral regions, and scars or striae in various body parts are typically treated with needle depths 1.5 to 3.0 mm. As a general rule of thumb, thicker or more fibrotic skin can be treated with deeper needle depths.

TREATMENT TECHNIQUE

Depending on the specific location to be treated, it is often helpful to divide the region into quadrants. For example, when treating the perioral region, the left upper, left lower, right upper, and right lower regions can be treated individually for more precise and uniform microneedling coverage. Gentle traction of the skin with one hand while simultaneously lowering the microneedling device perpendicular to the skin with the other hand assists the smooth delivery of microneedles into the skin. It is important to apply sufficient hyaluronic gel (supplied by the device company) on the treatment area surface to facilitate the gliding action of the microneedling device and to prevent untoward injury to the overlying epidermis. The treatment technique involves a combination of horizontal, vertical, and oblique device passes over the treatment areas, repeating approximately 3 to 6 times or until fine pinpoint bleeding is observed. When treating deep rhytides or scars, a "rocking" or "stamping" technique can be used to increase the density of microneedling channels created. Since needle lengths exceeding 1.0 mm may not penetrate to the corresponding dermal depth, it is useful to use pinpoint bleeding as the clinical end point of treatment.

When the clinical end point of uniform pinpoint bleeding has been achieved, ice water-soaked sterile gauze can be applied to remove excess blood and hyaluronic gel. Treatment can then be pursued in an adjacent treatment area or quadrant. The use of tap water is discouraged because of its possible contamination with pathogenic organisms which could potentially increase the risk of infection in the treatment areas. If any bleeding persists after cleansing the treatment area, gentle pressure with dry sterile gauze should be applied for several minutes. A thin

layer of hyaluronic acid gel can then be applied to the treatment region and allowed to dry.

POSTPROCEDURE RECOMMENDATIONS

For the first 4 hours after the procedure, the patient is instructed to apply the provided sample of hyaluronic acid gel to the skin. After 4 hours, a 1% hydrocortisone cream or a nonallergenic moisturizing cream can be applied to the treatment regions 2 to 4 times daily for 2 to 3 days. The use of a nonchemical (or physical) sunblock with SPF 30 or higher is advocated (on top of the moisturizer) during the first post-treatment week. Application of makeup may be resumed 2 days after the procedure and any active skin care products that the patient used pretreatment can be resumed in 5 to 7 days (when all traces of skin erythema have resolved). Microneedling treatment sessions are generally recommended at biweekly to monthly time intervals until the desired clinical results are achieved. Some patients elect to receive ongoing (single) microneedling treatment sessions on an annual or semiannual basis to maintain and/or enhance their cosmetic outcomes.

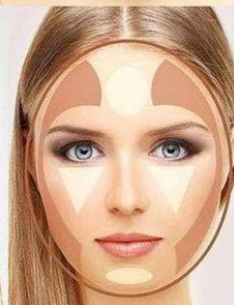
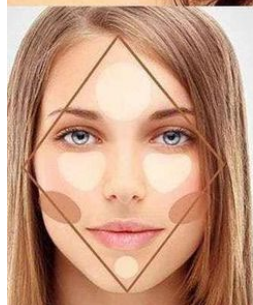
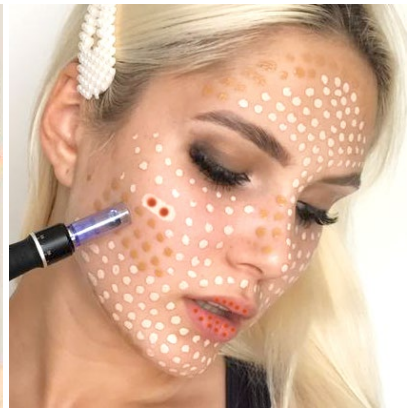
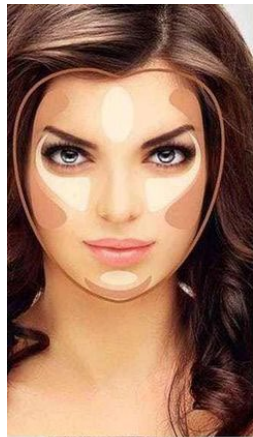
SIDE EFFECTS AND COMPLICATIONS

Microneedling is considered a noninvasive esthetic procedure and has a low rate of associated adverse effects. The most common and expected side effects of treatment include mild erythema, localized edema, and skin flaking, which typically resolves within 48 to 72 hours. Pinpoint bleeding is self-limited and resolves within minutes after the procedure with application of gentle manual pressure and ice water-soaked gauze.

CONCLUSION

Microneedling is a safe, minimally invasive, and effective esthetic treatment modality for numerous dermatologic conditions including acne and other scars, rhytides, and striae. With its fast post-treatment recovery, limited side effect profile, and impressive clinical results, microneedling is a valuable alternative to more invasive procedures such as laser skin resurfacing and deep chemical peeling. In addition, microneedling has demonstrated definitive histologic changes that are directly responsible for the clinical improvement observed.

BB GLOWING



BB Glowing

The best in composition set for giving the skin a healthy glowing. This set is universal and suitable for any skin type (from 1 to 4 skin type). You can create the perfect skin tone, contouring the face, use a light and dark bb glow to highlight and darken, create a beautiful lip tone, give a face natural shining with blushes.

HOW IT WORKS

- Whitening, skin lightening by 2-3 tones
- Anti-age treatment
- Prevention of new inflammation
- Soothing skin after treatment

ACTIVE INGREDIENTS

- Sodium Hyaluronate — moisturizing, fine lines and wrinkles
- Hydrolyzed collagen — softness, hydration, rejuvenating
- Niacinamide — whitening, skin-restoring ingredient for aging and blemish-prone skin. Among these benefits is the ability to visibly improve the appearance of enlarged pores, uneven skin tone, fine lines.

PLANT EXTRACTS

- Antioxidants, Skin Soothing — Camellia sinensis, Rosa centifolia, Anthemis nobilis flower extract (Chamomile), Hamamelis virginiana, Aloe barbadensis (aloe vera)
- Centella asiatica (asiatic acid, hydrocotyl, or gotu kola) — rich source of amino acids and has soothing properties

PEPTIDES COMPLEX FOR SKIN-RESTORING

- Palmitoyl pentapeptide-4 (Trade name Matrixyl) — skin-restoring fatty acid mixed with amino acids. Studies from Sederma lab and from independent researchers have shown it can have an impact on the visual signs of aging, including fine lines and wrinkles.
- Acetyl hexapeptide-8 (argireline) — relaxation of the muscle and a reduction of expression wrinkles. Reduces the number and depth of wrinkles by more than 20 %.



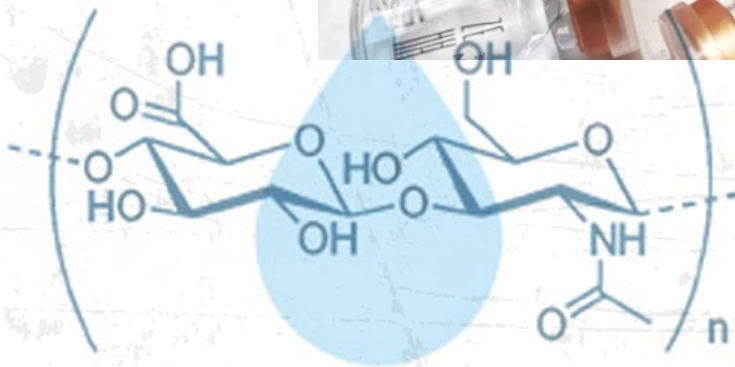
PROTOCOL

1. Choose a basic tone, a same as your skin color, or 1 tone lighter (you can mix 2 color for perfect base tone)
2. Apply at all face a base to even out your skin. This step just helps you create a uniform base.
3. Now take the darker tone and trace your temples. You have to determine your face shape before you begin this step. If you have a bigger forehead, apply the foundation stick straight into the hairline to minimize it.
4. You now need to enhance your cheekbones. Find your hollow part by placing your fingers on both the sides of the face. Where you feel your skin dip underneath the bones is your hollow part. Just above the hollow part is your cheekbone where you need to apply the color.
5. While contouring your nose, go a little narrow at the tip if you have a blunt nose. If you have a shorter nose, contour it with a dark foundation stick right into the brow to add length or width accordingly.

Before you begin applying the contour, you have to determine your face shape.

- For a heart-shaped face, you need to contour along the sides of the forehead and temples in order to create a balance between the lower and upper half of the face.
- An oblong shaped face needs to be contoured in such a way that it creates an illusion of a short and oval face shape.
- A square shaped face has to be contoured in such a way that the sharp jaw lines do not look so prominent. A round face has to be contoured in such a way that it creates an illusion of length to give it an oval shape.

HYALNANO FILLING



HyalNano Filling

Non-injection hyaluronic acid filler for wrinkles.

It is an alternative to anti-wrinkle fillers. It contains 100-% hyaluronic acid. The product consists of hyaluronic acid powder and serum. Due to the small size of nanoparticles (from 2 to 4 kDA), hyaluronic acid penetrates deeply into the dermis and removes wrinkles. The same result as when using needle injections. No pain, no side effect, not injection treatment — great result.

TYPES OF USAGE

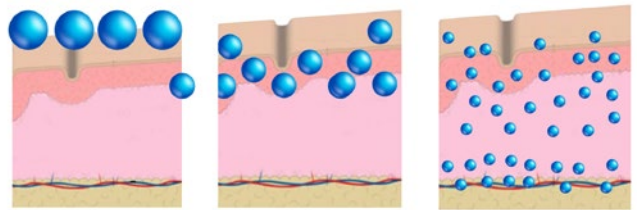
- Can be applied by dermapen (by professional cosmetologist only)
- It can be used to treat any area of the face and all kinds of wrinkles, even under the eyes
- Sterile and safe
- Long-term results (up to 1 year)
- The effect is visible after the first treatment

PROTOCOL

1. Cleanse the skin with an antiseptic (e. g. Chlorhexidine)
2. Sprinkle some powder on the area where you want to remove the wrinkle.
3. Penetrate the powder deep into the skin with a dermapen (dermapen is for professionals). For Dermapen you can use a nano needling or 36 or 12 needling cartridge. You should treat each one area for 2-5 minutes. Don't be afraid if your skin turns red or you see small drops of blood — this is normal. Total time of one treatment 30–40min.
4. After the powder penetrates, cover the skin with HyalNano serum and also penetrate with a dermapen. Approximately 10 min for this step.
5. You can finish the treatment by applying your favorite face mask to soothe your skin or LED mask. After that, it is also recommended to use any regenerating face cream.



Ampoule, 2 g



FAQ

1. HOW LONG DOES IT LAST IN THE SKIN?
Usually we recommend to make it as a course of 3–5 treatment. Effect will be last 8–12 months long, depending on skin types. For dry skin it maximum results!

2. HOW MUCH OF THE PRODUCT SHOULD I USE PER AREA ON THE FACE? AND WHAT DEPTH OF DERMAPEN, IS IT OK WITH 12 PIN? I SAW ALSO MIGHT BE WITH NANO CARTRIDGES.

You can use 12 or 36 pin. Usually nano pin given a deep hydration, but not as filler effect. Powder is sterile, so possible use even for very deep penetration

3. HOW MANY TIMES I HAVE TO PASS THE DERMAPEN ON THE SKIN TO ABSORB IT? OR IS IT JUST WHEN YOU SEE SKIN ABSORBED, IT'S ENOUGH?

At one area you need to stamping it 3–4 times. Around 30–40min on the face skin. Amount of powder depending on area and applying areas. From half to 1 ampoule of powder for 1 treatment.

INGREDIENT

100 % Hyaluronic Acid

SKIN CARE

| | |
|--|----|
| Cleansing Gel..... | 22 |
| Skin Toner For Whitening And Acne..... | 23 |
| Sunblock Cream..... | 24 |
| Post Treatment Gel..... | 25 |

Cleansing Gel

- Evens out facial tone and texture with fruit acids
- Prepares skin for professional treatments
- Has mild exfoliating, anti-inflammatory and antioxidant effect
- Removes excess sebum

Cleansing gel is for all skin types, based on natural ingredients with fruit acids, thoroughly cleanses the skin of make-up, dust and dirt and sebum. After Protocol, the gel makes the skin pleasant to the touch, sufficiently hydrated, clean and radiant. Improves blood circulation and microcirculation, restoring a healthy complexion. Fruit acids moisturize the skin, restore the skin's protective barrier, promote tissue regeneration, improve dry skin, provide antioxidant protection.

SUGGESTED USE

- Apply to wet skin of face, neck, and décolleté
- Massage for a couple of minutes
- Rinse with water after use

INGREDIENTS

Purified Water, Sodium Laureth Sulfate (SLES-70 %), Glycerol, Cocoamidopropyl Betaine, Sodium Carboxymethyl Cellulose, Vitamins (A, E, C, B5) Complex, D-panthenol, Fruit Acids, Cucumber Extract, Silk Protein Hydrolyzate, Lactic Acid, Sharomix Preservative, Gucci Perfume



Flacon, 275 ml

Skin Toner for Whitening and Acne

Algae Peeling Solution

- Eliminates deep pollution, tones up skin and gently removes dead skin cells
- Contains AHA/BHA acids for skin cleansing, exfoliating, inflammation reducing, and acne treatment
- Contains hydrogen peroxide and kojic acid for skin brightening and whitening, pigmentation spots and melasma reducing
- Prepares the skin for professional treatments

HOW TO USE

- As toner: after cleansing skin with Zena Cleansing Gel, apply generous amount to cotton pad for gentle sweeping over skin
- As algae peeling solution: mix 10 ml with Algae Peeling 5 g sachet, then add 5 ml of water

INGREDIENTS

Water with Silver Nanoclusters, Hydrogen Peroxide, Kojic Acid, AHA (Fruit Acids), Citric Acid, Glycerin, Cucumber Extract, Parsley Extract, Willow Bark Extract, Orange Peel Extract, Vitamins (A, B, C, E) Complex, D-panthenol, BHA (Salicylic Acid), Niacinamide, Hyaluronic Acid, Lavender Essential Oil, Chlorhexidine, Sharomix Preservative, Perfume



Flacon, 275 ml

Intensive UV Sun Block Cream

SPF 50+ PA+++

Flacon, 275 ml

- Spreads well over skin, absorbs quickly, leaves no oily sheen or stickiness
- Protects skin from UVA and UVB rays with combination of active ingredients, preventing sunburn & inflammation

HOW TO USE

Apply a thin even layer on face, neck, and décolleté before going in the sun

Finishing cream after procedures: In professional care, it is used after peeling, microneedling and other mechanical effects on the skin. After the procedures, protection from the sun rays MUST be required, this cream will be simply indispensable in post-procedural care at any time of the year, because in the autumn or winter period, exposure to ultraviolet radiation is also harmful. Suitable as a makeup base for the face and as a sunscreen for face and body. Helps prevent unwanted pigmentation.

INGREDIENTS

Purified Water (Aqua), Vaseline Oil, Glycerol, Emulgade, Stearic Acid, Glycerin Monostearate, D-panthenol, Isopropyl Myristate (Palmitate), Carbopol Ultrez, Caustic Soda (alkali), Sharomix Preservative, Titanium Dioxide, Benzophenone, Dimethicone (silicone oil), Vitamins (A, E, C, B5) Complex, Aloe Extract, Cucumber Extract, Gucci Perfume



Post Treatment Gel

THE GEL...

- Can be used after injection procedures
- Has the herbal extract that soothes, eliminates itching, redness, and burning, does not irritate sensitive skin, has anti-inflammatory and antiseptic effect
- Has Algae extract improves the effect after peeling and helps remove bruises after injections, minimizes visual effects of injured skin, accelerates tissue regeneration
- Contains Allantoin that stimulates renewal of epidermis, helps exfoliate dead cells, slows down cell aging, prevents appearance of blackheads
- Is Panthenol based, can be used for body & face skin as post treatment care

PROTOCOL

- Apply 1 sachet of gel evenly to skin
- Spread and leave until completely absorbed
- The gel will create protective film that can be easily washed off with water

INGREDIENTS

Purified Water, Glycerin, Dexpanthenol, Allantoin, Algae Extract, Chamomile extract, Calendula, Propylene Glycol, Gelling Agent, Carbamide, Methylparaben, Diazolidinyl Urea, Propylparaben, Perfume composition, EDTA



Sachet, 2 ml

ACIDS

| | |
|--------------------------|----|
| AHA 44..... | 27 |
| BHA 20 | 28 |
| GBHA 15 | 29 |
| Jessner..... | 30 |
| Lactic 30 | 31 |
| Mandelic | 33 |
| Resorcin | 34 |
| Retinol Glycolic 25..... | 35 |
| TCA 10 | 36 |
| TCA 20 | 37 |

AHA 44 pH 2.0

The procedure stimulates the synthesis of collagen and elastin, resulting in the appearance of young cells that contribute to the overall rejuvenation and smoothing of the skin, narrowing of the pores

AHAs (alpha hydroxy acids) improve the appearance of the skin, increasing its smoothness, brightness, color and also exhibit cleansing and moisturizing effects. Penetrating into the stratum corneum, ana first reduces the adhesion of horny cells, which is easy to detect when exfoliating. AHA also has a strong moisturizing effect due to its ability to retain water. These moisturizing properties help to improve the keratolite action of the product. When the surface layer receives moisture, the distance between the cells increases and the cohesion of the cells decreases.

HOW IT WORKS

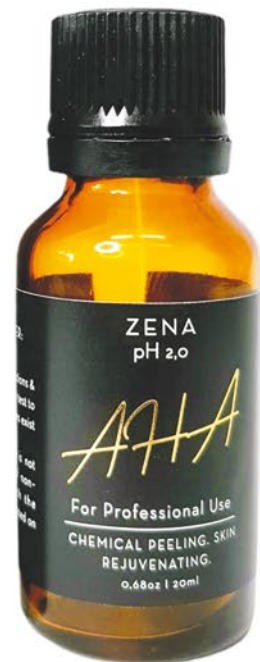
- Skin color and texture improvement
- Disappearance of fine wrinkles and smoothing of deep
- Procedure without discomfort and unpleasant side effects
- Very fast skin recovery
- Gradual and lasting result

HOW TO CALCULATE EXPOSURE TIME?

The beautician adjusts the exposure time by observing the flushing and sensations of the client. The patient experiences a slight burning sensation and tingling sensation. If these sensations are unbearable, then the acid must be neutralized immediately! Redness and peeling of the skin, swelling, which usually disappear after a few hours are possible. Usually they start with a small exposure of 5–7 minutes. Depending on the type of skin.

POST-PEEL CARE

The procedure is carried out with the subsequent Protocol of soothing and anti-inflammatory ingredients, gives the maximum therapeutic effect and allows this procedure to be carried out even with increased skin sensitivity. Since peeling significantly increases skin permeability, it is very good to carry out additional procedures after it that require deep penetration of the components. Typically, various moisturizing, depigmenting (whitening), sunscreen or nourishing creams are used as post-peels, depending on the general purpose of the treatment.



Flacon, 20 ml

INGREDIENTS

Lactic Acid — 13 %, Citric Acid — 13 %,
Glycolic Acid — 10 %, Malic Acid — 4 %,
Tartaric Acid — 4 %

BHA 20 pH 1.9

PROBLEMS

- Oily skin, acne, comedones, deep comedones
- I and II degree acne, post-acne, psoriasis, rosacea
- Fine mesh of wrinkles, photoaging
- Hyperpigmentation
- Actinic hyperkeratosis
- Skin microrelief damage

HOW IT WORKS

- Increased skin turgor
- As a bactericidal, sebostatic action
- Decreased secretion of sebaceous, sweat glands
- Does not penetrate deeply into the skin
- Has no post-peel side effect
- Has a strong anti-inflammatory, antiseptic effect
- Prevents the formation of comedones, softens the existing ones
- Excellent keratolytic
- Does not require neutralization
- Salicylic peeling with a low% content is ideal as a preparatory procedure before cleansing the face

PROTOCOL

- Do not use any scrubs / peels either before or after the serum procedure.
- Apply a small amount of serum to the skin for 2–5 minutes. Do not overexpose! After the specified time has elapsed, simply rinse off the serum with cool water, then apply a moisturizer or gel.
- Use acid serum once every 5–7 days.
- Be sure to use sunscreen (at least 30 SPF).
- During the procedure, the skin will turn red. There may also be a burning sensation on the skin. This is normal! Redness may remain even the next day after Protocol.
- If the skin burns too much, wash off immediately with water. This means that the skin is very sensitive, and the serum should be applied for no more than 1–2 minutes.



Flacon, 20 ml

INGREDIENTS

Salicylic Acid — 20 %, Ethanol

CONTRAINDICATIONS

- *Inflammation of the skin or infection of it in the active stage*
- *The presence of a focus of chronic infection in the body*
- *The period after operations on other organs*
- *Damage to the organs of the endocrine system (diabetes mellitus, thyrotoxicosis, and others)*
- *The presence of allergies or individual intolerance to the components of the chemical composition of Jessner peeling*
- *Pregnancy period (breastfeeding)*
- *Taking systemic retinoids for the treatment of severe acne (Roaccutane, Acnecutan)*
- *Violation of the integrity of the skin*
- *Viral diseases (herpes)*

GBHA 15 pH 2.3

This combination of acids stimulates cell renewal and, as a result, has more intense rejuvenating effect on all skin types, even very sensitive, without redness and flaking. When applying peeling, you must daily use sunscreen with a minimum of SPF 30 ++.

INDICATIONS

- Chronoaging, photoaging
- Enlarged pores
- Seborrhea, acne
- Oily skin, comedones, deep comedones
- Dry, thin skin
- Follicular hyperkeratosis
- Skin fading, fine wrinkle mesh
- Ingrown hair

TYPE OF USAGE

- Can be used as a pre-peel or as a stand-alone peeling. Exposure time: 5–10 minutes, it is possible to apply a second layer, then remove with a cotton pad or sponge with cold water. In case of severe redness or persistent burning sensation, wipe the face with a neutralizing compound
- Recommended number of procedures: for the face and décolleté 6–10 procedures once a week or as an independent procedure before cleansing the face — if necessary. The peeling procedure can be repeated, the need and the period of repetition is determined only by a cosmetologist.
- The chemical peeling procedure is traumatic for the skin, so it is advisable to cover it with a professional soothing post-procedure mask, the mask should be kept for 20 minutes, do not wash, let the residues soak into the skin.
- For healing and regeneration of the skin after the procedure, we recommend using Aloe Vera gel in home care. Aloe gel creates a protective film that stimulates the rapid recovery of deformed collagen and the regeneration of new protein, and then firmly binds the elastane and protein fibers with moisture. Also, this plant helps relieve pain and irritation, kills bacteria and stimulates healing.



Flacon, 20 ml

INGREDIENTS

Glycolic acid — 10 %, Salicylic acid — 5 %

CONTRAINDICATIONS

- *Inflammation of the skin or infection of it in the active stage*
- *The presence of a focus of chronic infection in the body*
- *The period after operations on other organs*
- *Damage to the organs of the endocrine system (diabetes mellitus, thyrotoxicosis, and others)*
- *The presence of allergies or individual intolerance to the components of the chemical composition of Jessner peeling*
- *Pregnancy period (breastfeeding)*
- *Taking systemic retinoids for the treatment of severe acne (Roaccutane, Acnecutan)*
- *Violation of the integrity of the skin*
- *Viral diseases (herpes)*

Caution: For patients with dark skin, a procedure perception test is required before peeling. Mandatory testing for sensitivity and allergic reaction (preliminary Protocol to the bend of the elbow or in the area behind the ear)

Jessner pH 1.8

42 % Jessner peel is done by brushing an acidic liquid onto the skin to remove the top layers and encourage new, younger looking skin to grow. While many chemical peels can cause lasting discoloration on darker skin, a recent small study found that a modified Jessner's solution safely and effectively reduces melasma and pigment imperfections in darker skin. The Jessner peel is typically a medium peel, which means it removes skin cells from the top layer of your skin, the epidermis, and the upper portion of the middle layer, the dermis. However, it can also be used as a superficial peel, which has a faster healing time but needs to be performed more often to get the results of a deeper peel.

INDICATIONS

- Dark patches
- Age spots
- Scars, wrinkles
- Melasma
- Hyperpigmentation
- Acne scars

TYPE OF USAGE

MINIMUM EXPOSURE TIME

- Face — 5 minutes. If several layers are applied, interval of 5 minutes is maintained each time.
- Neck — 1-2 layers, time 2 minutes

RECOMMENDED NUMBER OF PROCEDURES

5-6 procedures with an interval of 2-3 weeks. During the first session, it is desirable to apply 1-2 layers of the peeling composition. In subsequent sessions, the number of layers can be gradually increased to 6-8.

STORAGE CONDITIONS

It is necessary to store Jessner's peeling in a dark container in a cool place with a tightly closed lid, since resorcinol darkens in the light and when air is available.

After the peel, your skin may continue to burn or sting for 20 minutes or more. Your skin will be red, swollen, and tight for the first 24 hours or so. After that, the swelling will go down and your skin will begin peeling.



Flacon, 20 ml

INGREDIENTS

Salicylic acid — 12%, Recinol — 15 %, Lactic acid — 10 %, Citric acid — 5 %

CONTRAINDICATIONS

- *Skin inflammation or active infection. Open wounds, abrasions, severely inflamed abscesses on the face*
- *The presence of a focus of chronic infection in the body.*
- *The period after operations on other organs.*
- *Damage to the organs of the endocrine system (diabetes mellitus, thyrotoxicosis and others).*
- *Taking systemic retinoids for the treatment of severe acne (Roaccutane, Acnecutan).*
- *Violation of the integrity of the skin.*
- *Viral diseases (herpes).*
- *With prolonged exposure to ultraviolet rays*
- *Increased body temperature*
- *Pregnancy and lactation*

Lactic 30 pH 3.0

30 % Lactic peeling refers to acid peels, it is a lactic acid solution. It is recommended for those who have sensitive skin or have contraindications to chemical peels. Lactic peeling refers to superficial light peels, that is, it has a gentle effect on the skin. It is often recommended as an addition to comprehensive skin rejuvenation programs. Lactic peels are used to prepare the skin for more serious cosmetic procedures. Lactic acid used for peeling activates metabolic processes in the skin. Lactic peels help restore moisture balance in the skin. The main advantage of peeling is that lactic acid is a natural substance for the human body and therefore, it does not cause allergic reactions, the skin after Lactic peeling practically never becomes inflamed.

INDICATIONS

- Acne
- Wrinkles
- Skin laxity

PROTOCOL IN STAGES

See next page for details

1. Pre-peeling preparation
2. Make-up removal and cleansing
3. Toning
4. Pre-peeling
5. Peeling (applying directly lactic acid)
6. Neutralization
7. Soothing and moisturizing the skin
8. Post-peeling care at home



Flacon, 20 ml

INGREDIENTS

Deionized water, Lactic Acid 30 %, Sodium Hydroxide

CONTRAINDICATIONS

- *Skin inflammation or active infection. Open wounds, abrasions, severely inflamed abscesses on the face*
- *The presence of a focus of chronic infection in the body*
- *The period after operations on other organs*
- *Damage to the organs of the endocrine system (diabetes mellitus, thyrotoxicosis and others)*
- *Taking systemic retinoids for the treatment of severe acne (Roaccutane, Acnecutan)*
- *Violation of the integrity of the skin*
- *Viral diseases (herpes)*
- *With prolonged exposure to ultraviolet rays*
- *Increased body temperature*
- *Pregnancy and lactation*

Caution: For patients with dark skin, a procedure perception test is required before peeling.andatory testing for sensitivity and allergic reaction (preliminary Protocol to the bend of the elbow or in the area behind the ear.

Lactic 30

PROTOCOL IN STAGES

1. PREPARATION

- The instructions for almost all cosmetic products for chemical peeling recommend pre-peeling preparation.
- For 7-14 days before the procedure, use a cream with 15 % phenoxyglycolic acid or a pre-peeling gel with AHA acids at night to prepare the skin, that is, to make it smoother and more susceptible to peeling.
- On the day of the procedure, we do not use cream and gel at night in the morning.
- Lactic peels should be started with a minimum acid exposure time, after having done a sensitivity test. With this option, the course of procedures is significantly increased to obtain a lasting and desired result.

2. MAKEUP REMOVER, CLEANSING, TONING

- Makeup removal is carried out as standard by your professional cosmetics line. For additional effect and skin cleansing, use a toner.
- Pre-peeling is used for better penetration of lactic acid during peeling, as well as to check the sensitivity of the skin to the drug used.
- We also recommend applying pre-peeling with glycolic and lactic acids to the skin of the face and neck.

3. PEELING

- Without washing off the pre-peeling, the cosmetologist applies lactic acid (chosen by the cosmetologist, depending on the problem) for 8-12 minutes (if the peeling is performed for the first time, the exposure time is reduced to 3-5 minutes).
- The time, how many layers to apply and the concentration is chosen by the cosmetologist, taking into account the sensitivity, color and type of skin, as well as the solution of the tasks.
- For certain problems, it can be mixed with other acids (consult our technologist if necessary).

4. NEUTRALIZATION

- Lactic peeling allows you not to use a neutralizer, but only to wash your face well with water, as it is very light and does not react with water.

5. SOOTHING AND MOISTURIZING THE SKIN

- At the end of the procedure, you should use a soothing mask (it is good when silk and extracts are included in such a mask).
- The exposure time of the mask is about 20 minutes. And then a post-peel moisturizer is applied.

6. POST-PEELING REHABILITATION

- May include 1-2 treatments in the salon, or home care. If you have very sensitive and problem skin, and it is imperative to use restorative home care products.
- Post-peeling agents are recommended and selected by a beautician; they have a pronounced moisturizing, regenerating, antioxidant, anti-inflammatory, soothing and vitaminizing effect.

7. FREQUENCY

- The peeling procedure must be carried out in a course, the necessity and the period of repetition is determined only by a cosmetologist.
- Recommended number of procedures: 6-10 procedures with an interval of 7-10 days.

Mandelic pH 2.4

15 % Mandelic acid is an increasingly popular alpha hydroxy acid derived from the hydrolysis of an extract of bitter almonds.

Do not use if you have nut allergies. For Professional Use Only.

INDICATIONS

- Photo-ageing
- Irregular pigmentation
- Acne
- Melasma

TYPES OF USAGE

- Stimulates new skin cells for long-term health
- Exfoliates dead skin cells for immediate clarity
- Promotes younger looking skin by diminishing wrinkles
- Improves skin elasticity, hydration, and texture
- Reduces the appearance of pores and prevents future breakouts

PROTOCOL

- The instructions for almost all cosmetic products for chemical peeling recommend pre-peeling preparation. For 7-14 days before the procedure, use a cream with 15% phenoxyglycolic acid or a pre-peeling gel with AHA acids at night to prepare the skin, that is, to make it smoother and more susceptible to peeling. On the day of the procedure, we do not use cream and gel at night in the morning.
- Cleanse skin thoroughly before applying the peel. Cover the entire affected area one to three layer using cotton ball. After 3-5 minutes wash the area with cool water well.
- *Attention! Because excessive drying of the skin may occur, start with one Protocol daily, then gradually increase to two to three times daily if needed or as directed by a doctor.*
- *If excessive dryness or peeling occurs, reduce Protocol to once a day or every other day.*
- *By using this product, user agrees that we are not liable for any skin or body-part damage or misuse of instructions. We recommend only a professional apply and monitor the Protocol of our products and we hold no responsibility for anyone that bypasses our recommendation of consulting with and using a professional to apply any chemical peel product.*



Flacon, 20 ml

INGREDIENTS

Mandelic acid — 15 %, Propanediol, Ethanol

CONTRAINDICATIONS

- *Skin inflammation or active infection. Open wounds, abrasions, severely inflamed abscesses on the face*
- *The presence of a focus of chronic infection in the body*
- *The period after operations on other organs*
- *Damage to the organs of the endocrine system (diabetes mellitus, thyrotoxicosis and others)*
- *Taking systemic retinoids for the treatment of severe acne (Roaccutane, Acnecutan)*
- *Violation of the integrity of the skin*
- *Viral diseases (herpes)*
- *With prolonged exposure to ultraviolet rays*
- *Increased body temperature*
- *Pregnancy and lactation*

Resorcinol pH 2.4

33 % peel has a simultaneous antiseptic, anti-inflammatory, strong fungicidal and antibacterial effect, is especially effective against acne, which makes it indispensable in the treatment of acne. It is used for dense, thick skin, phototype I-III. Controls excess sebum, removes comedones, dark spots, scars.

INDICATIONS

- Acne, post-acne, grade I-IV acne
- Seborrheic dermatitis, rosacea
- Lenticular melanosis, melasma
- Dyschromia
- Photo- and chronoaging
- Scars (atrophic, hypertrophic), stretch marks, pustules
- Preparation for laser resurfacing

PROTOCOL

- Minimum exposure time: 3 minutes. If several layers are applied, interval of 3 minutes is maintained each time.
- Recommended number of procedures: 3–6 procedures with an interval of 2 weeks.
- During the first session, it is desirable to apply 1–2 layers of the peeling composition. In subsequent sessions, the number of layers can be gradually increased to 6–8.
- The chemical peeling procedure is traumatic for the skin, therefore it is advisable to cover it with a professional soothing post-procedure mask, hold the mask for 20 minutes, do not wash, let the residues soak into the skin.
- For healing and skin regeneration after procedure, we recommend using Aloe Vera gel.

INGREDIENTS

Resorcinol 13 %, Salicylic acid 10 %, Lactic acid 5%, Citric acid 5 %

CONTRAINDICATIONS

- *Skin integrity damage*
- *Skin inflammation*
- *Active herpes*
- *Severe somatic diseases, autoimmune diseases*
- *Rosacea*
- *Pregnancy, lactation*
- *Chemotherapy and radiation treatment*
- *Individual intolerance*
- *Taking hypoglycemic drugs, sulfanyl urea derivatives, taking retinoids*

Mandatory testing for sensitivity and allergic reaction (preliminary application to the bend of the elbow or in the area behind the ear).



Flacon, 20 ml

Retinol Glycolic 25 pH 2.5

Professional peeling, with a total acid content of 25 %. Accelerates mitosis, increases the activity of enzymes, normalizes keratinization, promotes an even distribution of melanin. Powerful, pronounced anti-aging effect. Before this procedure, it is recommended to prepare with salicylic peeling 15-20%, or Jesner's peeling, or glycolic peeling 12-15 %. Then, to stimulate collagen production, Protocol of vitamin C is recommended.

INDICATIONS

- Chronoaging, photoaging
- Lifting effect
- Hyperpigmentation, melasma, lentigo
- Hyperkeratosis, senile keratomas
- Enlarged pores
- Dry, thin skin

PROTOCOL

- Minimum exposure time: to enhance the effect, the product can be rubbed in (with a cotton swab) for 5 minutes.
- Exposure time 1-10 minutes.
- Then rinse off with cold water. Recommended number of procedures: 5-6 procedures with an interval of 2-3 weeks. UV protection required.
- The chemical peeling procedure is traumatic for the skin, therefore it is advisable to cover it with a professional soothing post-procedure mask, hold the mask for 20 minutes, do not wash, let the residues soak into the skin.
- For healing and skin regeneration after the procedure, we recommend using Aloe Vera gel. Aloe gel creates a protective film that stimulates the rapid recovery of deformed collagen and the regeneration of new protein, and then firmly binds the elastane and protein fibers with moisture. Also, this plant helps relieve pain and irritation, kills bacteria and stimulates healing.



Flacon, 20 ml

INGREDIENTS

Glycolic acid — 20 %, Retinoic acid — 5 %

CONTRAINDICATIONS

- *Skin integrity damage*
- *Skin inflammation*
- *Active herpes*
- *Severe somatic diseases, autoimmune diseases*
- *Rosacea*
- *Pregnancy, lactation*
- *Chemotherapy and radiation treatment*
- *Individual intolerance*
- *IV-V skin types according to Fitzpatrick*
- *Prolonged exposure to the sun*
- *Taking retinoids*
- *Active solar period (spring, summer, first half of autumn)*

TCA 10 pH 1.8

Treats age-related skin changes, effectively renews the skin and significantly improves skin condition. Suitable for all skin types. Does not contain fragrance.

INDICATIONS

- Skin hyperpigmentation
- Spots
- Freckles
- Scars
- Post-acne marks

PROTOCOL

- The instructions for almost all cosmetic products for chemical peeling recommend pre-peeling preparation.
- For 7–14 days before the procedure, use a cream with 15% phenoxyglycolic acid or a pre-peeling gel with AHA acids at night to prepare the skin, that is, to make it smoother and more susceptible to peeling.
- On the day of the procedure, we do not use cream and gel at night in the morning.
- During evening skin care, after thoroughly cleansing the skin with a special product (eg cleansing foam). Do not use any scrubs/peels either before or after the serum procedure!
- Apply a small amount of serum to your face. The serum can be applied in three layers (3 is the maximum). The more layers, the stronger the effect.
- The first layer usually does not cause any discomfort, but the second and third cause a burning sensation. You can use a flow of cold air to reduce this unpleasant sensation (take a fan or use cold air from a hairdryer) In total, keep the serum on the skin for 3 to 5 minutes, but no longer! Overexposure will not improve the effect, the skin may begin to peel off, it is very hot.)
- After the specified time, just rinse off the serum with cool water, why apply a moisturizer or gel. Use acid serum no more than once a week.
- It is recommended to do a course of 5 procedures every week. It is imperative to use sunscreen during the entire course (at least 30 SPF).



Flacon, 20 ml

INGREDIENTS

Deionized Water, Trichloroacetic Acid — 10 %

CONTRAINDICATIONS

- *Skin inflammation or active infection. Open wounds, abrasions, severely inflamed abscesses on the face*
- *The presence of a focus of chronic infection in the body*
- *The period after operations on other organs*
- *Damage to the organs of the endocrine system (diabetes mellitus, thyrotoxicosis and others)*
- *Taking systemic retinoids for the treatment of severe acne (Roaccutane, Acnecutan)*
- *Violation of the integrity of the skin*
- *Viral diseases (herpes)*
- *With prolonged exposure to ultraviolet rays*
- *Increased body temperature*
- *Pregnancy and lactation*

TCA 20 pH 1.8

20% Trichloroacetic peeling is intended only for professional use by a beautician with a medical education! Suitable for ages 25+, with acne, post-acne scars, scars. For age 35+, it helps to eliminate fine wrinkles, smooth folds, age-related skin changes, effectively renews the skin and significantly improves skin condition. Helps to deal with stagnant spots and the effects of acne. Suitable for all skin types. Does not contain fragrances.

INDICATIONS

- Skin hyperpigmentation
- Spots
- Freckles
- Scars
- Post-acne marks

PROTOCOL

- The instructions for almost all cosmetic products for chemical peeling recommend pre-peeling preparation.
- For 7–14 days before the procedure, use a cream with 15 % phenoxyglycolic acid or a pre-peeling gel with AHA acids at night to prepare the skin, that is, to make it smoother and more susceptible to peeling.
- On the day of the procedure, we do not use cream and gel at night in the morning.
- TCA peeling is a median peel, therefore it is recommended to do a superficial peel before the procedure.
- Apply a small amount to cleansed skin. You need to apply the composition in layers. The first layer usually does not cause any discomfort, but the second and third cause a burning sensation.
- You can use a flow of cold air to reduce this discomfort (take a fan or use cold air from a hair-dryer).
- Recommended to apply in three layers and keep on the skin for 2–5 minutes. However, the exact time of Protocol is regulated by the beautician.



POST TREATMENT

- The next day after peeling, actively use a soothing gel or cream with panthenol.
- On the second day, redness is usually still on the skin, skin tightness is felt.
- In the future, within 3–5 days, a period of intense peeling passes.
- Exfoliating skin cannot be removed by hand; it must exfoliate on its own.

INGREDIENTS

Deionized Water, Trichloroacetic Acid — 20 %

CONTRAINDICATIONS

- *Skin inflammation or active infection. Open wounds, abrasions, severely inflamed abscesses on the face*
- *The presence of a focus of chronic infection in the body*
- *The period after operations on other organs*
- *Damage to the organs of the endocrine system (diabetes mellitus, thyrotoxicosis and others)*
- *Taking systemic retinoids for the treatment of severe acne (Roaccutane, Acnecutan)*
- *Violation of the integrity of the skin*
- *Viral diseases (herpes)*
- *With prolonged exposure to ultraviolet rays*
- *Increased body temperature*
- *Pregnancy and lactation*

ZENA
COSMETICS

For additional information, send enquiry to info@zenabeauty.top

Designed in Ivan Voin Studio — ivanvoin.com, 2021